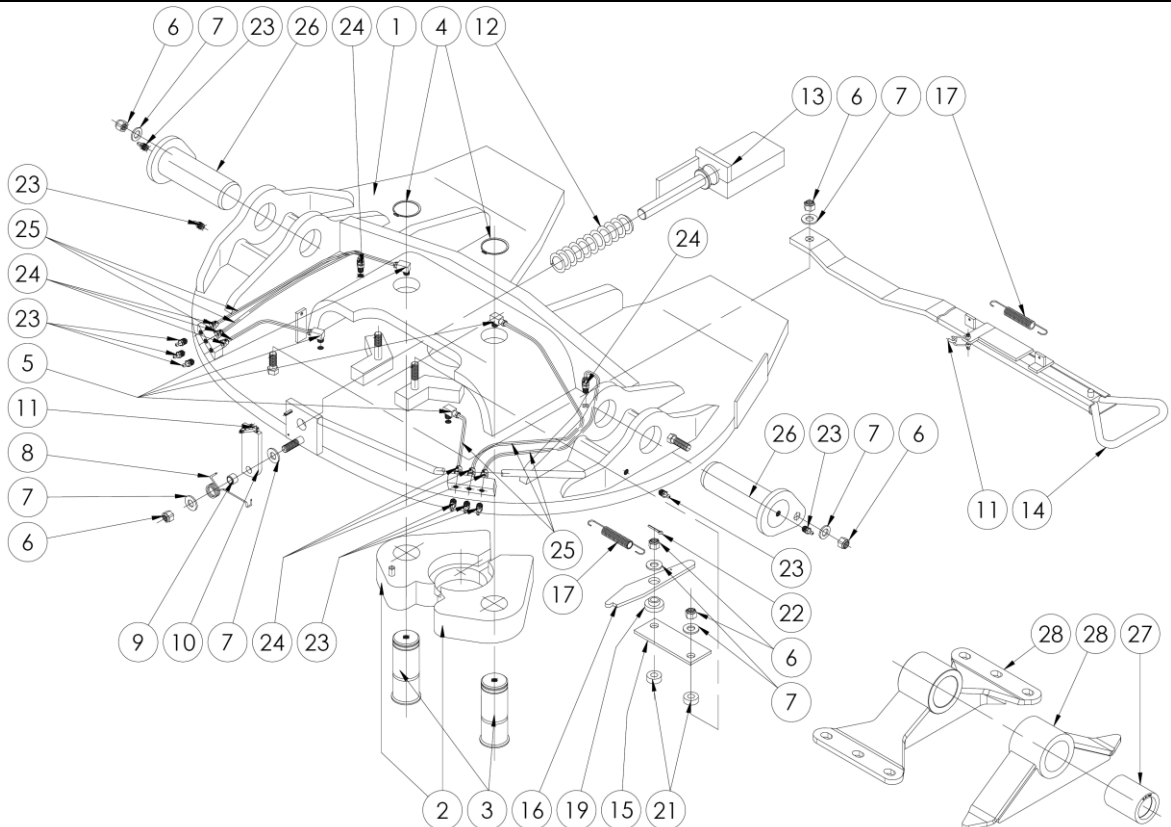
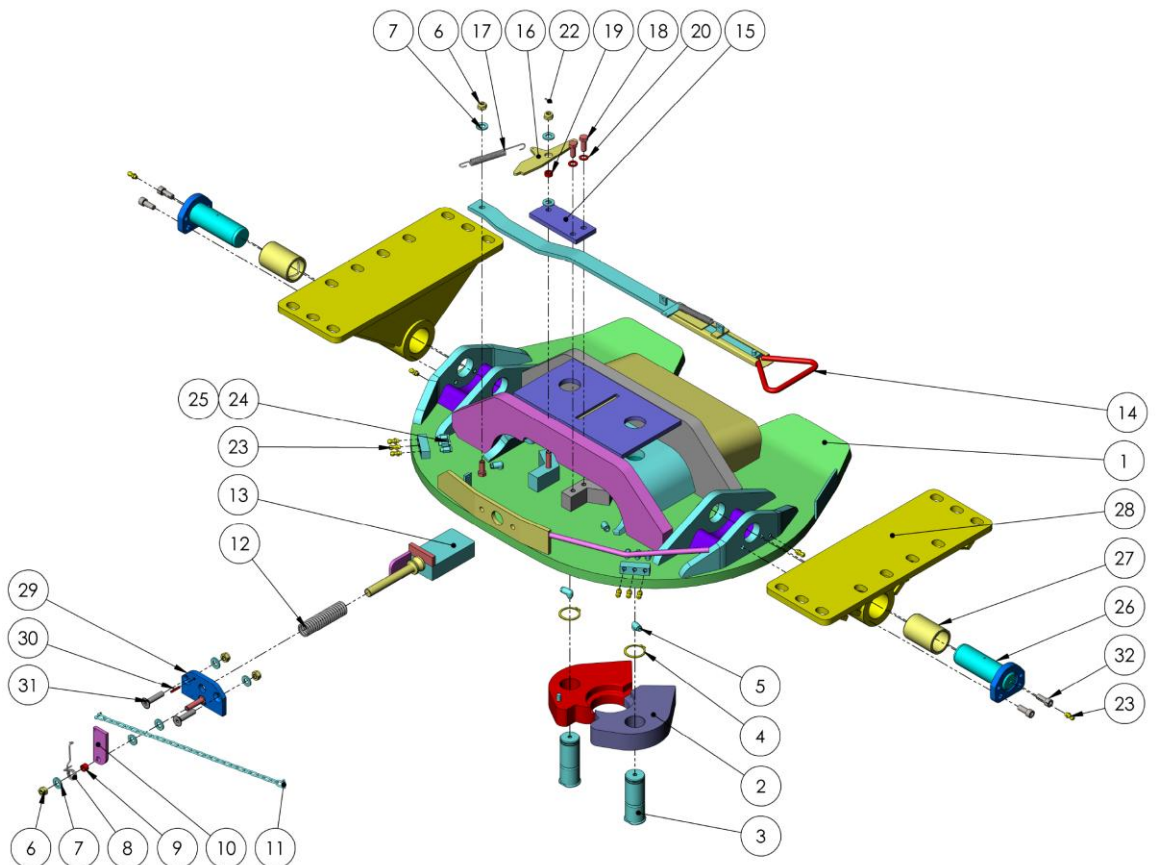


KH, KS, KD Turntables

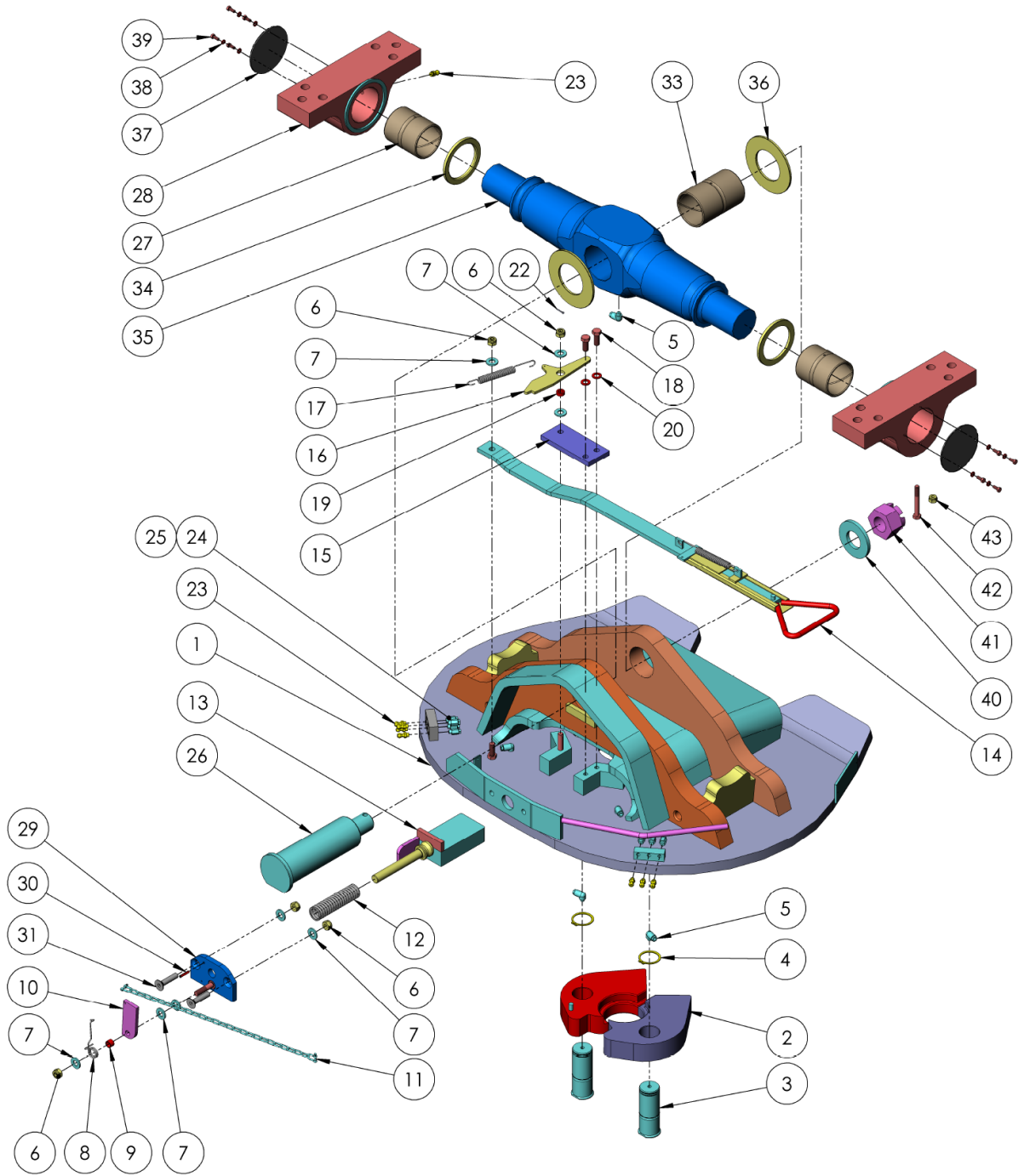
KH



KS



PARTS VIEW – 2 PIECE JAW TURNTABLES



KD



PARTS VIEW – 2 PIECE JAW TURNTABLES

Ref No.	PART No.	DESCRIPTION	APPLICATION				
			QTY PER TURNTABLE	KH10 Roadboss Std Width	KH11 Roadboss Extra Wide	KS Single Oscillating	KD Double Oscillating
1	?????????	BASE PLATE ASSY	1	X			
1	114630021	BASE PLATE ASSY	1		X		
1	KH127	BASE PLATE ASSY	1			X	
1	KHOC010	BASE PLATE ASSY	1				X
2	KHJS50	JAW SET, 174kN – 50mm	1	X	X		
2	KHJS75	JAW SET, 174kN – 75mm	1	X	X		
2	KHJS260/50	JAW SET, 260kN – 50mm	1	X	X		
2	KHJS260/75	JAW SET, 260kN – 75mm	1	X	X		
2	KHJS260/90	JAW SET, 260kN – 90mm	1	X	X		
2	KHOC032	JAW SET, 90mm	1			X	X
3	KH002	PIN, JAW PIVOT	2	X	X	X	X
4	KH003	CIRCLIP-	2	X	X	X	X
5	KH022	GREASE FITTING-MALE-90°	2	X	X	X	X
6	KH020	NYLOC NUT – M12	6	X	X		
6	KH020	NYLOC NUT – M12	5			X	X
7	KH017	WASHER	7	X	X		
7	KH017	WASHER	8			X	X
8	KH021	SPRING, SAFETY LEVER	1	X	X	X	X
9	KH026	SPACER	1	X	X	X	X
10	KH015	SAFETY LATCH	1	X	X	X	X
11	KH019	CHAIN ASSY	1	X	X	X	X
12	KH012	SPRING, WEDGE	1	X	X	X	X
13	KH011	WEDGE	1	X	X		
13	KHOC028	WEDGE	1			X	X
14	KH028	HANDLE ASSY	1	X	X	X	X
15	KH016	WEDGE RETAINING PLATE	1	X	X		
15	KHOC044	WEDGE RETAINING PLATE	1			X	X
16	KH008	TRIGGER	1	X	X		
16	KHOC045	TRIGGER	1			X	X
17	KH006	SPRING	1	X	X	X	X
18	11496849	BOLT - M12 x 30	2			X	X
19	KH009	BUSH	1	X	X		
19	KHOC027	BUSH – TRIGGER ARM	1			X	X
20	KHA052	SPRING WASHER - M12	2			X	X
21	KH010	SPACER, WEDGE PLATE	2	X	X		
22	KH018	SPLIT PIN	1	X	X		
22	KHA122	SPLIT PIN	1			X	X
23	KH023	1/8 BSP GREASE NIPPLE	10	X	X	X	
23	KH023	1/8 BSP GREASE NIPPLE	9				X
24	KH024	1/4 x 1/8 CONNECTOR MALE	6	X	X	X	
24	KH024	1/4 x 1/8 CONNECTOR MALE	7				X
25	KH025	NYLON TUBE	A/R	X	X	X	X
NS	GI001	GREASELESS INSERT SET	1	X	X		
NS	GRB002	BOLT GL INSERT SET	1	X	X		
26	KH007	PIN	2	X	X		
26	N500035-001	PIN	2			X	
26	KHOC003	PIN	1				X



PARTS VIEW – 2 PIECE JAW TURNTABLES

Ref No.	PART No.	DESCRIPTION	APPLICATION				
			QTY PER TURNTABLE	KH10 Roadboss Std Width	KH11 Roadboss Extra Wide	KS Single Oscillating	KD Double Oscillating
27	KH005	BUSH	2	X	X		
27	11506430	BUSH	2			X	
27	KHOC006	BUSH	1				X
28	KH062	FOOT 128mm – 55mm pivot	2	X	X		
28	KH063	FOOT 148mm – 75mm pivot	2	X	X		
28	KH071	FOOT 166mm – 93mm pivot	2	X	X		
28	KH069	FOOT 196mm – 123mm pivot	2	X	X		
28	KH070	FOOT 218mm – 145mm pivot	2	X	X		
28	KH782000-150	FOOT 150mm – 73mm pivot	2	X	X		
28	KH782000-172	FOOT 172mm – 95mm pivot	2	X	X		
28	KH782000-185	FOOT 185mm – 108mm pivot	2	X	X		
28	N500031-001	FOOT	2			X	
28	KHOC002	FOOT	2				X
29	KHOC034	PLATE ASSM-Wedge Guide	1			X	X
30	11496893	PIN - Ø5 x 26	1			X	X
31	KHOC026	SCREW, C/SUNK M12	2			X	X
32	N100037-001	Socket Head Cap Screw, M12	4			X	

Ref No.	PART No.	DESCRIPTION	APPLICATION	
			QTY PER TURNTABLE	KD Double Oscillating
33	KHOC007	BUSH	2	X
34	KHOC008	THRUST WASHER	2	X
35	KHOC005	PIVOT ARM	1	X
36	KHOC031	THRUST WASHER	2	X
37	KHOC009	END COVER	2	X
38	KHOC020	SPRING WASHER – M6	8	X
39	11437702	SET SCREW – M6 x 16	8	X
40	KHOC004	WASHER	1	X
41	KHOC018	NUT, CASTELLATED – M42	1	X
42	KHOC019	BOLT – M10 x 80	1	X
43	11476477	NYLOC NUT – M10	1	X

Note: X: Standard | NS: Not Shown